





LEGEND

	Indicative Site Boundary
	Marine Ecology Study Area (10km)
	Water Connection Corridor
	Mean High Water Springs (MHWS)

NOTES

© Crown copyright and database rights 2024
 Ordnance Survey 0100031673.
 Contains Ordnance Survey Data © Crown
 Copyright and database right 2024.
 © 2024 Microsoft Corporation Earthstar
 Geographics SIO

ISSUE PURPOSE
 Preliminary Environmental Information
 Report

PROJECT NUMBER
 60717119

FIGURE TITLE
 Marine Ecology Study Area

FIGURE NUMBER
 Figure 12-1



This drawing has been prepared for the use of AECOM's client. It may not be used, modified, reproduced or used again by third parties, except as agreed by AECOM or as required by AECOM or as required by law. AECOM accepts no responsibility and denies any liability whatsoever to any party that uses or relies on this drawing without AECOM's express written consent. All measurements must be obtained from the stated dimensions.



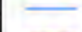


CLIENT

Uniper

CONSULTANT

AECOM Limited
 2 City Walk, Holbeck
 Leeds
 LS11 9AR
 www.aecom.com

LEGEND

-  Indicative Site Boundary
-  Marine Ecology Study Area (10km)
-  Water Connection Corridor
-  Mean High Water Springs (MHWS)
-  Site of Special Scientific Interest (SSSI)
-  Ramsar
-  Special Area of Conservation (SAC)

NOTES

© Crown copyright and database rights 2024 Ordnance Survey 0100031673.
 Contains Ordnance Survey Data © Crown Copyright and database right 2024.
 Contains Natural Resources Wales information © Natural Resources Wales and Database Right. All rights Reserved.
 Contains Ordnance Survey Data, Ordnance Survey Licence number AC0000849444.
 Crown Copyright and Database Right.
 © Natural England copyright. Contains Ordnance Survey data © Crown copyright and database right 2024.
 © 2024 Microsoft Corporation © 2024 Maxar ©CNES (2024) Distribution Airbus DS, © 2024 Microsoft Corporation Earthstar Geographics SIO

ISSUE PURPOSE

Preliminary Environmental Information Report

PROJECT NUMBER

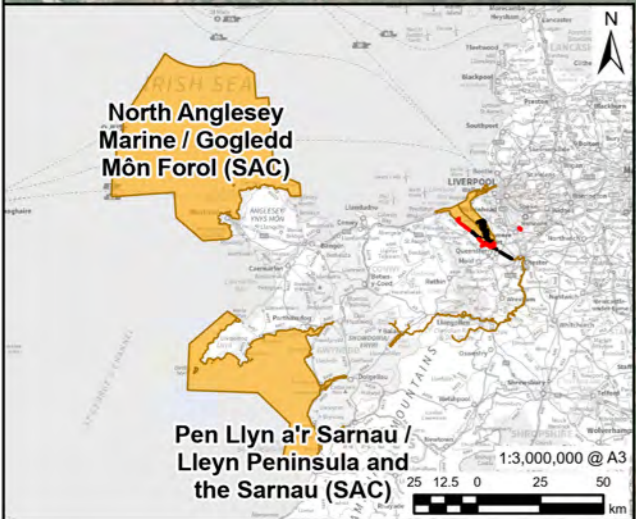
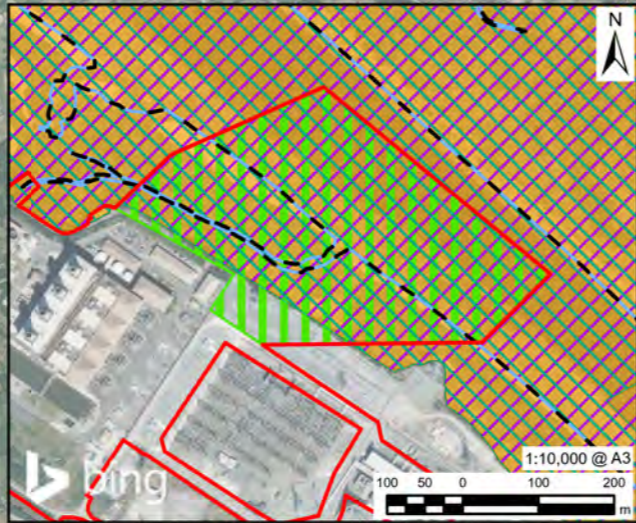
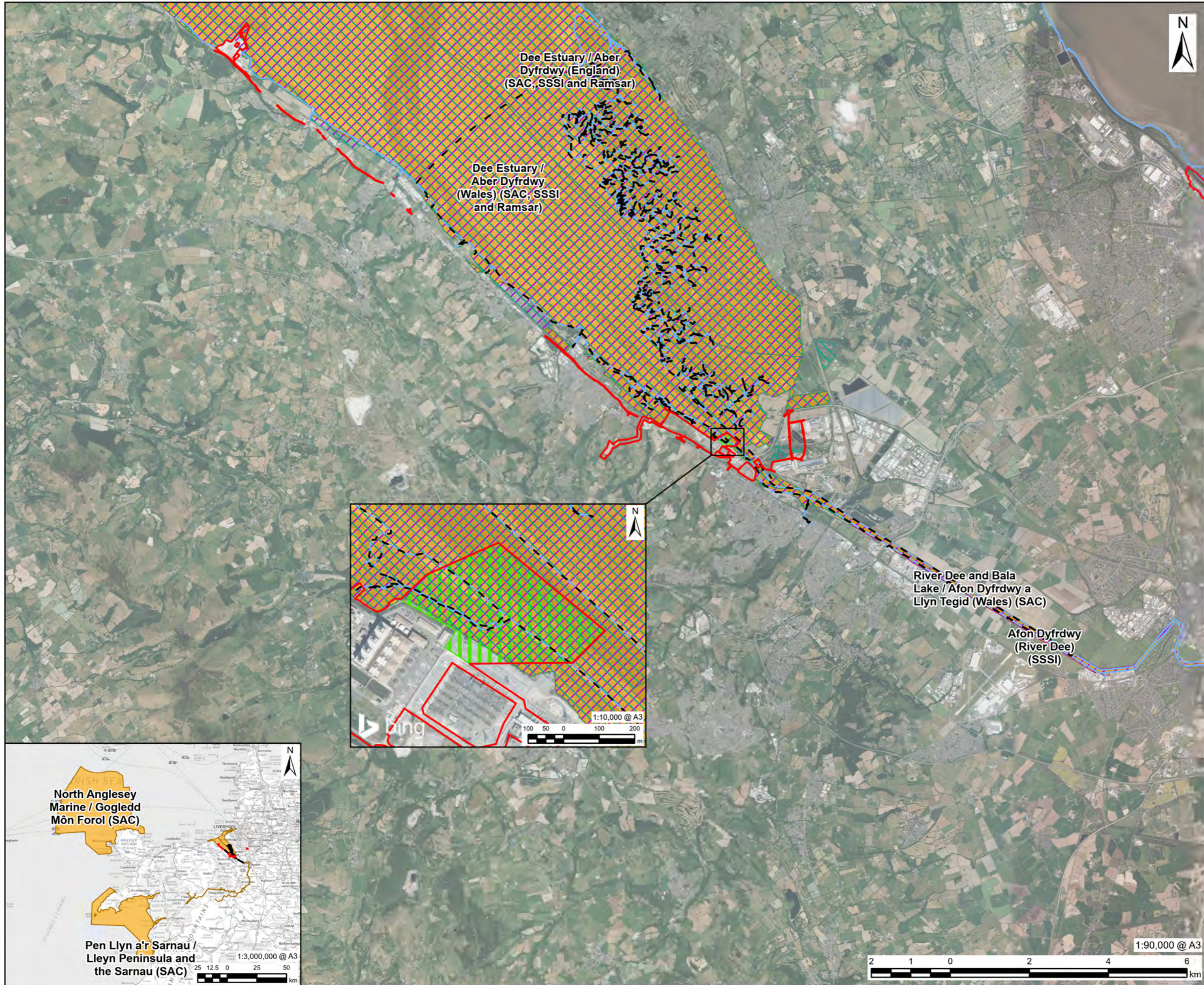
60717119

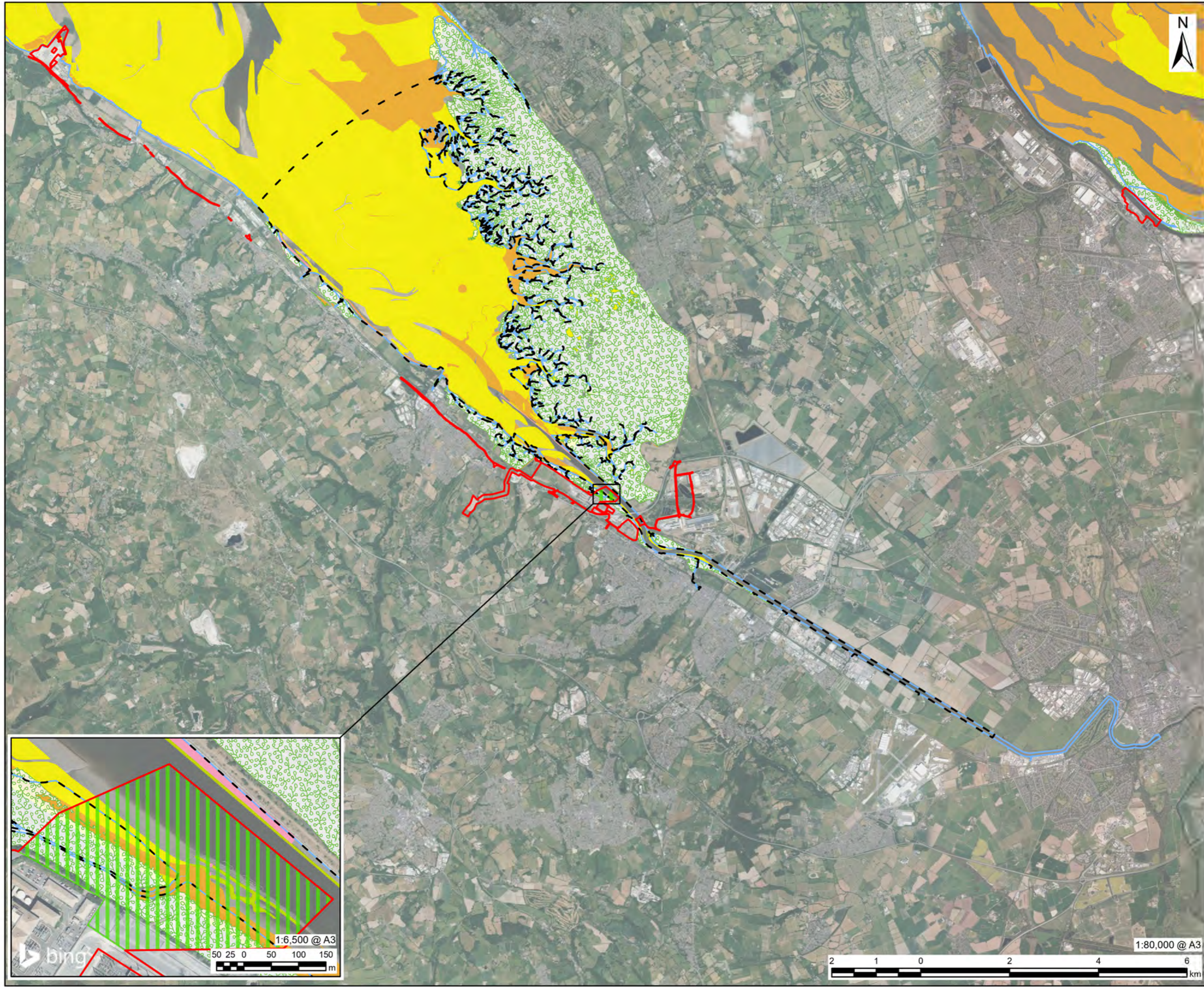
FIGURE TITLE

Designated Sites with Marine Ecological Features

FIGURE NUMBER

Figure 12-2





LEGEND

- Indicative Site Boundary
- Marine Ecology Study Area (10km)
- Water Connection Corridor
- Mean High Water Springs (MHWS)
- Saltmarsh (Wales)¹
- Estuaries (H1130): Reefs (H1170)²
- Intertidal Rock (A1)
- Estuaries (H1130): Mudflats and Sandflats Not Covered by Seawater at Low Tide (H1140)²
- Intertidal Mixed Sediments (A2.4E)
- Intertidal Mud (A2.3E)
- Intertidal Sand and Muddy Sand (A2.2E)

1. Data sourced from DataMapWales Saltmarsh Extents: https://datamap.gov.wales/layers/inspire-nrw_SALTMARSH_EXTENTS.

2. Data sourced from Natural England Marine Habitats and Species Open Data: <https://www.data.gov.uk/dataset/bfc23a6d-8879-4072-95ed-125b091f908a/marine-habitats-and-species-open-data-england>.

NOTES

© Crown copyright and database rights 2024 Ordnance Survey 0100031673.
Contains Ordnance Survey Data © Crown Copyright and database right 2024.
These datasets are available under the Open Government Licence (OGL). See <https://www.data.gov.uk/dataset/bfc23a6d-8879-4072-95ed-125b091f908a/marine-habitats-and-species-open-data-england> for full attribution statement.
Contains Natural Resources Wales information © Natural Resources Wales and Database Right. All rights Reserved.
© 2024 Microsoft Corporation © 2024 Maxar ©CNES (2024) Distribution Airbus DS, © 2024 Microsoft Corporation Earthstar Geographics SIO
Full extent of habitats can be seen on Defra's Magic Map Application; <https://magic.defra.gov.uk/magicmap.aspx>

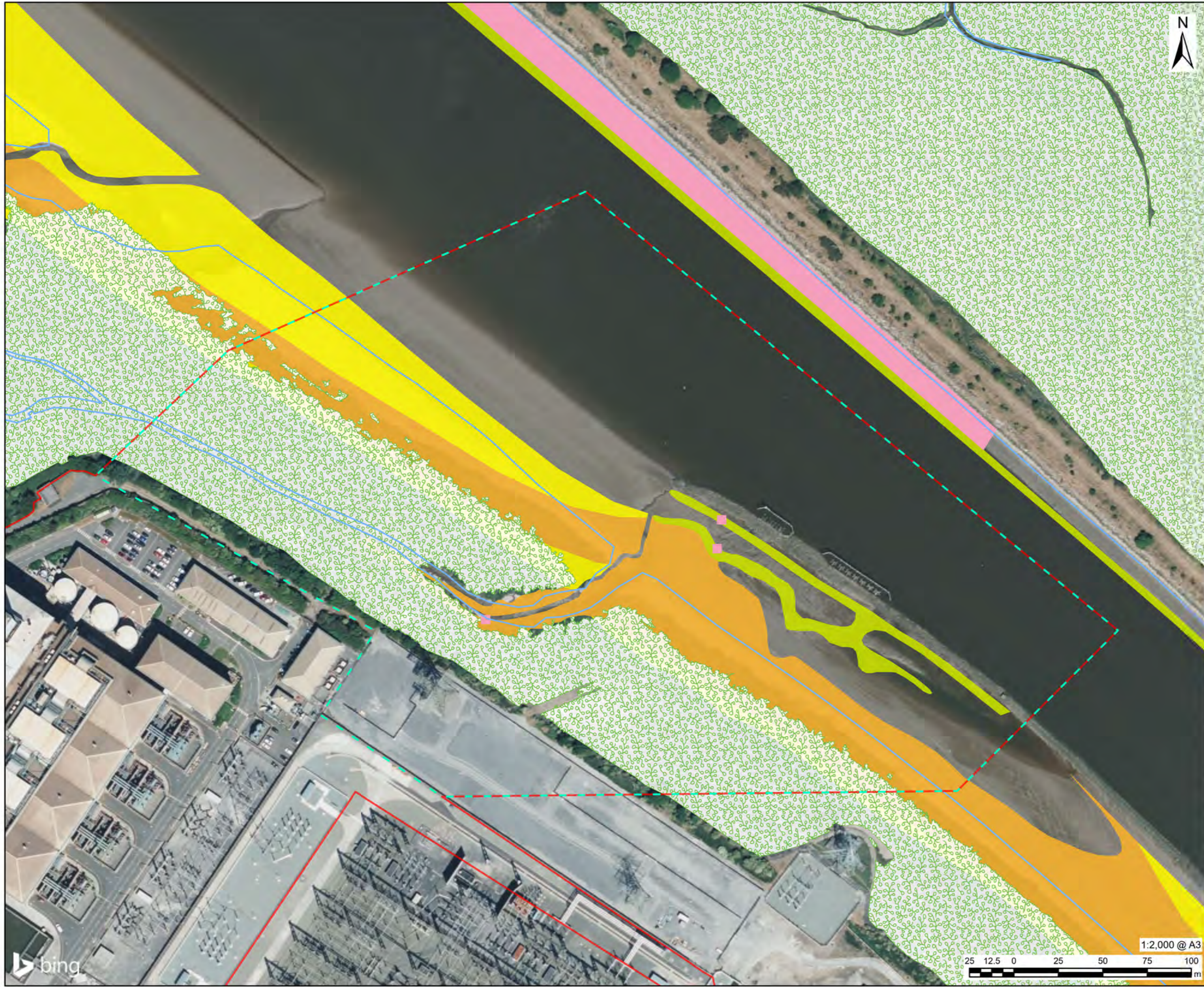
ISSUE PURPOSE
Preliminary Environmental Information Report

PROJECT NUMBER
60717119

FIGURE TITLE
Overview of Intertidal Benthic Habitats within the Study Area

FIGURE NUMBER
Figure 12-3

This drawing has been prepared for the use of AECOM's client. It may not be used, modified, reproduced or used again by third parties, except as agreed by AECOM or as required by law. AECOM accepts no responsibility and denies any liability whatsoever to any party that uses or relies on this drawing without AECOM's express written consent. Do not scale this document. All measurements must be obtained from this scaled dimension.



LEGEND

- Indicative Site Boundary
- Water Connection Corridor
- Mean High Water Springs (MHWS)
- Broadscale Habitat Types¹**
- Saltmarsh (Wales)
- Estuaries (H1130): Reefs (H1170)²**
- Intertidal Rock (A1)
- Estuaries (H1130): Mudflats and Sandflats Not Covered by Seawater at Low Tide (H1140)²**
- Intertidal Mixed Sediments (A2.4E)
- Intertidal Mud (A2.3E)
- Intertidal Sand and Muddy Sand (A2.2E)

1. Data sourced from DataMapWales Saltmarsh Extents: https://datamap.gov.wales/layers/inspire-nrw_SALTMARSH_EXTENTS.
 2. Data sourced from Natural England Marine Habitats and Species Open Data: <https://www.data.gov.uk/dataset/bfc23a6d-8879-4072-95ed-125b091f908a/marine-habitats-and-species-open-data-england>.

NOTES

© Crown copyright and database rights 2024 Ordnance Survey 0100031673. Contains Ordnance Survey Data © Crown Copyright and database right 2024. These datasets are available under the Open Government Licence (OGL). See <https://www.data.gov.uk/dataset/bfc23a6d-8879-4072-95ed-125b091f908a/marine-habitats-and-species-open-data-england> for full attribution statement. Contains Natural Resources Wales information © Natural Resources Wales and Database Right. All rights Reserved. © 2024 Microsoft Corporation © 2024 Maxar ©CNES (2024) Distribution Airbus DS Full extent of habitats can be seen on Defra's Magic Map Application: <https://magic.defra.gov.uk/magicmap.aspx>

ISSUE PURPOSE

Preliminary Environmental Information Report

PROJECT NUMBER

60717119

FIGURE TITLE

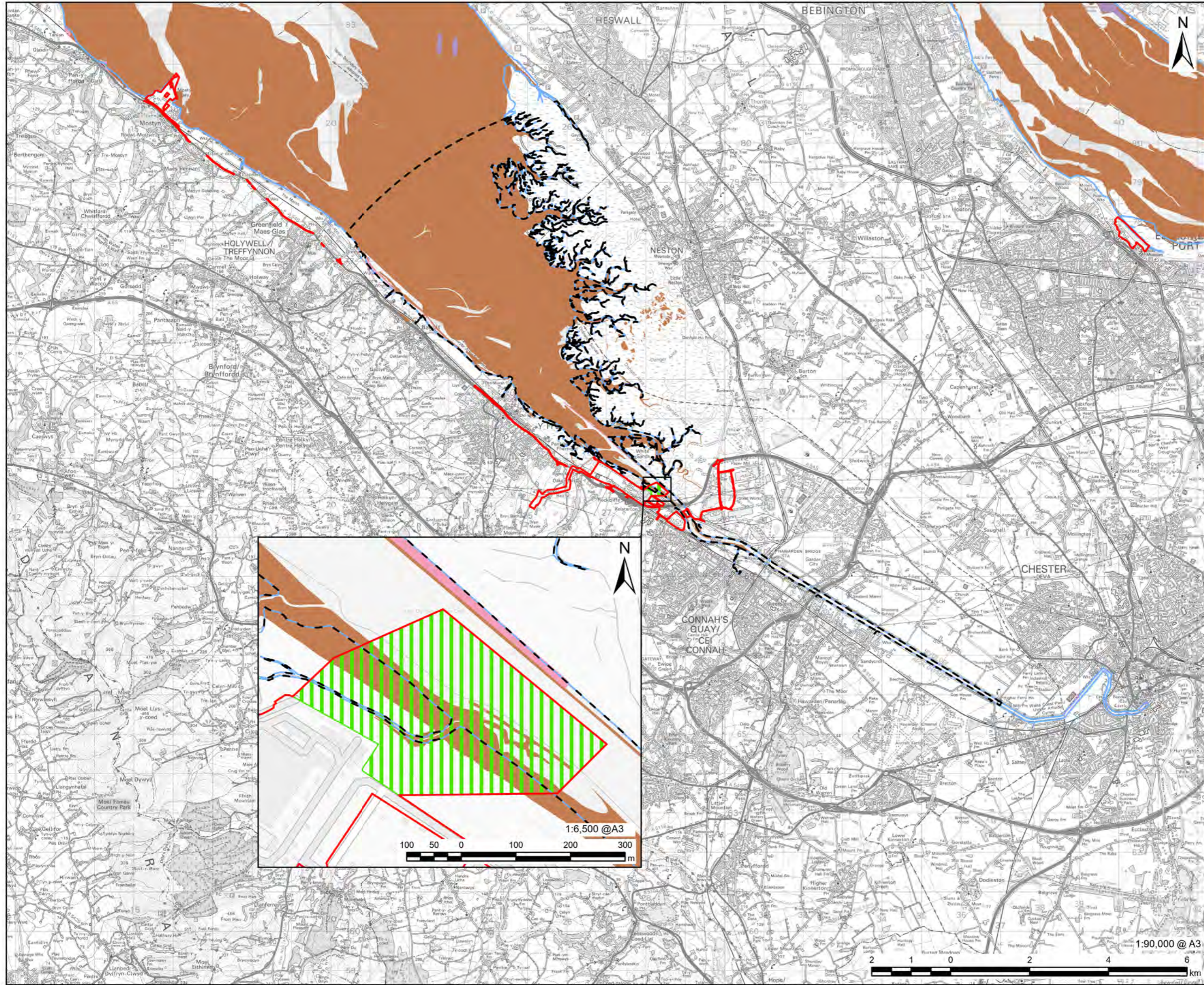
Close-up of Broadscale Intertidal Benthic Habitats

FIGURE NUMBER

Figure 12-4



This drawing has been prepared for the use of AECOM's client. It may not be used, modified, reproduced or raised again by third parties, except as agreed by AECOM's client. If it may not be used, modified, reproduced or raised again by third parties, except as agreed by AECOM's client. Do not scale this document. All measurements must be obtained from the stated dimensions.



- Indicative Site Boundary
- Marine Ecology Study Area (10km)
- Water Connection Corridor
- Mean High Water Springs (MHWS)
- WFD Habitats Higher Sensitivity¹**
- Mussel Beds (*Modiolus modiolus*, *Mytilus edulis* & others) (A1.22, A2.72, A5.62, A4.24, A3.361)
- Rockshore (Intertidal rock A1)
- WFD Habitats Lower Sensitivity¹**
- Intertidal Soft Sediment (Sand, Mud & Mixed A2.2, A2.3, A2.4)

¹ Data sourced from Natural England Marine Habitats and Species Open Data: <https://www.data.gov.uk/dataset/bfc23a6d-8879-4072-95ed-125b091f908a/marine-habitats-and-species-open-data-england>.

NOTES

© Crown copyright and database rights 2024
Ordnance Survey 0100031673.
Contains Ordnance Survey Data © Crown
Copyright and database right 2024.
These datasets are available under the Open
Government Licence (OGL). See <https://www.data.gov.uk/dataset/bfc23a6d-8879-4072-95ed-125b091f908a/marine-habitats-and-species-open-data-england> for full attribution statement.

ISSUE PURPOSE

Preliminary Environmental Information
Report

PROJECT NUMBER

60717119

FIGURE TITLE

Water Framework Directive Sensitive
Habitats

FIGURE NUMBER

Figure 12-5